



Pentura TMS122 M

Functional and economical general purpose batten for 1xTL5 fluorescent lamp with aluminium symmetric reflector for surface mounting on the wall or ceiling.

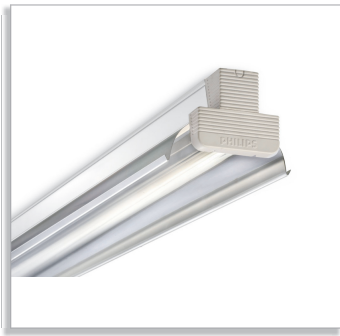
Features

- Sleek dimensions (37 mm width)
- Coupled with TL5 lamp & high frequency ballast, the luminaire is one of the most efficient systems.
- Housing made of CRCA sheet steel, powder coated & is spared of any weld spots.
- Optional imported anodised glossy reflector can be used for effective light distribution.

Application

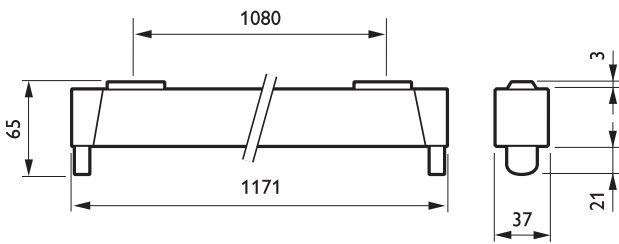
- Small offices
- Conference rooms
- Reception & public service areas
- Recreational areas (restaurants, cafeteria)
- Shops
- Boutiques
- Textile mills

Related products

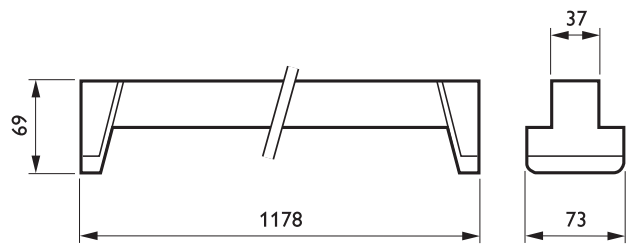


TMS122m

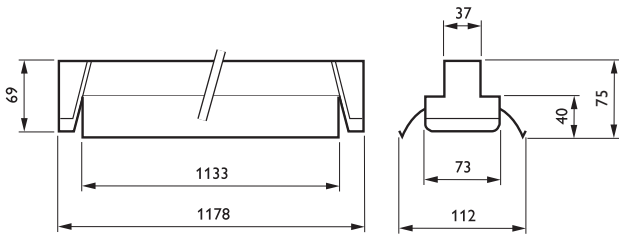
Dimensional drawing



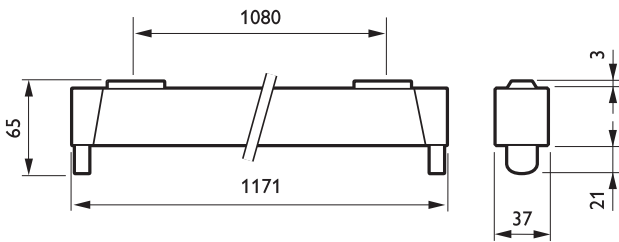
TMS122



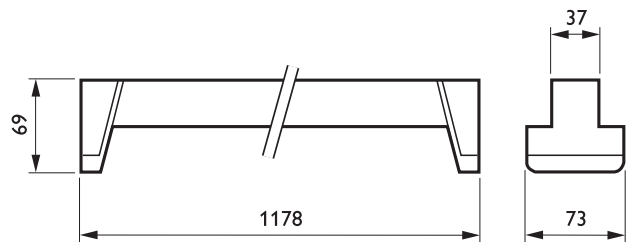
TMS122



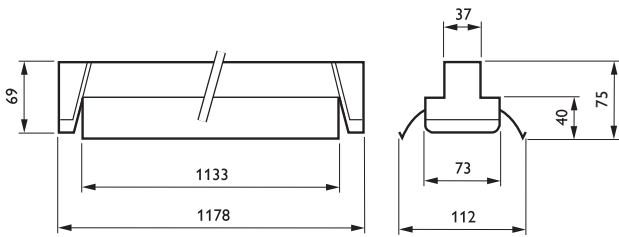
TMS122



TMS122



TMS122



TMS122

General information

Order code	Product family code	Number of lamps	Lamp family code	Lamp power	Gear
919015810349	TMS122	1	TL5	54	EBP
919015810350	TMS122	1	TL5	28	EBT
919015810351	TMS122	2	TL5	28	EBT

Order code	Product family code	Number of lamps	Lamp family code	Lamp power	Gear
919215100085	TMS122	1	TL5	28	EBE
919215100086	TMS122	2	TL5	28	EBE



© 2011 Koninklijke Philips Electronics N.V.
All rights reserved.

Specifications are subject to change without notice. Trademarks are the property of Koninklijke Philips Electronics N.V. or their respective owners.

www.philips.com/lighting

2011, December 20
data subject to change